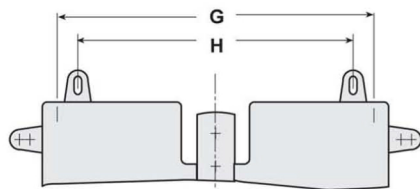


# Amperage Ratings for Syntron® EB-A Drives

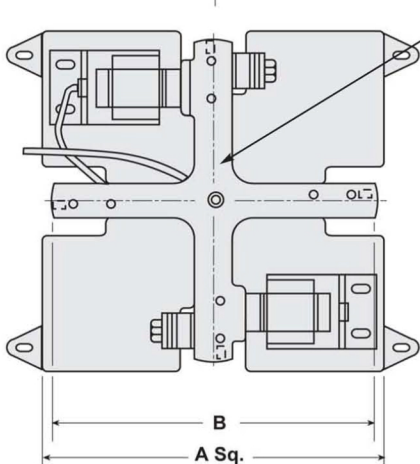
## Voltage and Cycle

Drive	115/60	208/60	230/60	460/60	575/60	110/50	220/50	380/50
<b>EB-112 -A</b>								
A.C.	8	4.4	4	2	1.6	6.9	3.5	2
R.C.	4.1	2.3	2.1	1	0.8	3.5	1.75	1
<b>EB-132 -A</b>								
A.C.	10	5.8	5.2	2.6	2.1	8.9	4.5	2.6
R.C.	5.9	3.3	3	1.5	1.2	5	2.5	1.4
<b>EB-162 -A</b>								
A.C.	17.2	9.5	8.6	4.3	3.4	14.8	7.4	4.3
R.C.	8.1	4.5	4	2	1.6	6.7	3.4	1.9
<b>EB-192 -A</b>								
A.C.	20	11.1	10	5	4	16.9	8.5	4.9
R.C.	8.9	4.9	4.5	2.2	1.8	7.4	3.7	2.1
<b>EB-222-A</b>								
A.C.	N/A	19.9	18	9	7.2	N/A	15.3	8.8
R.C.	13.5	7.5	6.8	3.4	2.7	11.3	5.7	3.3
<b>EB-252 -A</b>								
A.C.	N/A	19.9	18	9	7.2	N/A	15.3	8.8
R.C.	13.5	7.5	6.8	3.4	2.7	11.3	5.7	3.3
<b>EB-322-A</b>								
A.C.	N/A	16.6	13.4	6.7	5.4	N/A	11.42	6.6
R.C.								
<b>EB-372-A</b>								
A.C.	N/A	21	17	8.5	6.8	N/A	14.2	8.2
R.C.								



G & H dimensions are for models EB- 322-A and EB-372-A which are supplied with eight isolators.

Optional rim mount clamps available (supplied as separate items). Rim mounting holes available on EB-112 through EB-192-A. For larger sizes consult factory.



Center mounting for 14 and 18-inch cascade bowls, 9 and 13-1/2-inch conical bowls. Center hold down for rim-type clamp mount.

Metal retainers may be rotated 360 degrees.

Adjustable height vibration isolator. Rotatable metal retainer attached to isolator. Height of unit may be adjusted with retainer in fixed radial location. Floating fastener may be tightened for rigid attachment to isolator

