



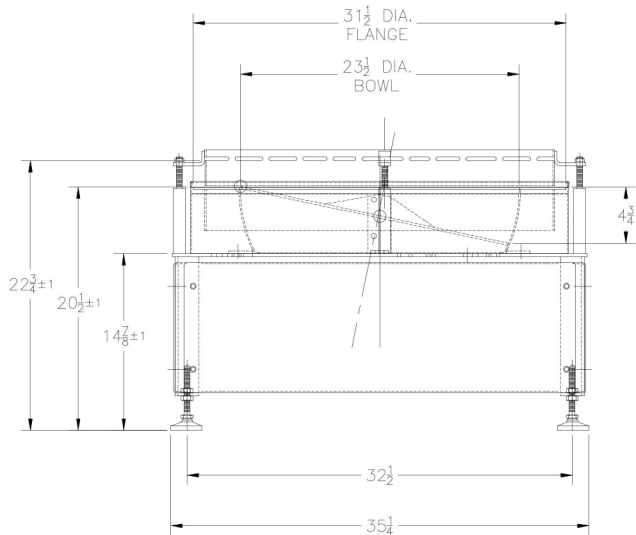
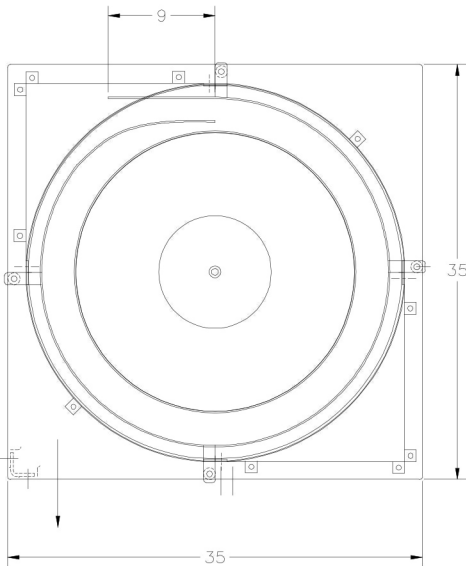
# CRF-23-D ROTARY FEEDER

## Standard Features:

- All type 304 stainless steel construction.
- Dual DC drive motors (one for disc and one for rotating flange) w/ independent variable speed controls.
- Fully accessible covers.
- Stationary bowl wall with revolutionary rotating flange design.
- Minimal run-out and eccentricity.
- Easily adjustable fence for adding orientation features.
- Minimal service required.
- 115 volt 60 hertz operation.

## Optional Features:

- Urethane lined center cone.
- UHMW flange and disc.
- Various linings available.
- Additional voltages available.



CCW SHOWN

Homer City Automation, Inc.

57 Cooper Avenue

Homer City, PA 15748

Phone (724)-479-4503

FAX: (724)-479-4767

Email: [info@hcasyntron.com](mailto:info@hcasyntron.com)

Web: [www.syntronpartsfeeders.com](http://www.syntronpartsfeeders.com)