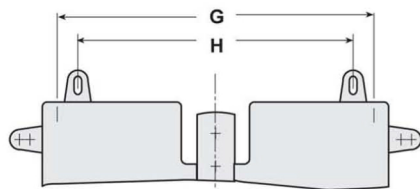


Amperage Ratings for Syntron® EB-A Drives

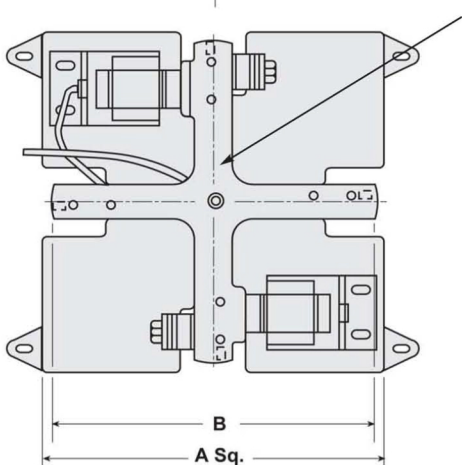
Voltage and Cycle

Drive	115/60	208/60	230/60	460/60	575/60	110/50	220/50	380/50
EB-112 -A								
A.C.	8	4.4	4	2	1.6	6.9	3.5	2
R.C.	4.1	2.3	2.1	1	0.8	3.5	1.75	1
EB-132 -A								
A.C.	10	5.8	5.2	2.6	2.1	8.9	4.5	2.6
R.C.	5.9	3.3	3	1.5	1.2	5	2.5	1.4
EB-162 -A								
A.C.	17.2	9.5	8.6	4.3	3.4	14.8	7.4	4.3
R.C.	8.1	4.5	4	2	1.6	6.7	3.4	1.9
EB-192 -A								
A.C.	20	11.1	10	5	4	16.9	8.5	4.9
R.C.	8.9	4.9	4.5	2.2	1.8	7.4	3.7	2.1
EB-222-A								
A.C.	N/A	19.9	18	9	7.2	N/A	15.3	8.8
R.C.	13.5	7.5	6.8	3.4	2.7	11.3	5.7	3.3
EB-252 -A								
A.C.	N/A	19.9	18	9	7.2	N/A	15.3	8.8
R.C.	13.5	7.5	6.8	3.4	2.7	11.3	5.7	3.3
EB-322-A								
A.C.	N/A	16.6	13.4	6.7	5.4	N/A	11.42	6.6
R.C.								
EB-372-A								
A.C.	N/A	21	17	8.5	6.8	N/A	14.2	8.2
R.C.								



G & H dimensions are for models EB- 322-A and EB- 372-A which are supplied with eight isolators.

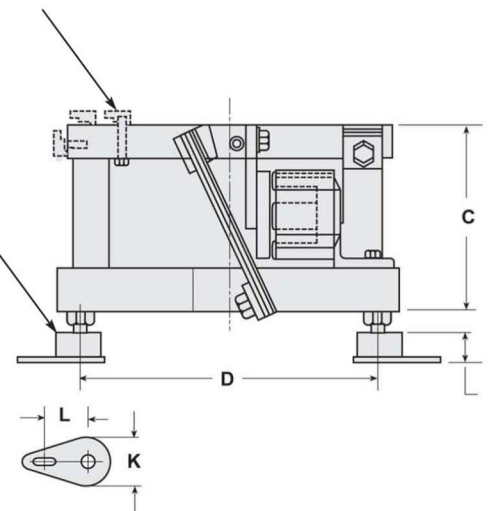
Optional rim mount clamps available (supplied as separate items). Rim mounting holes available on EB-112 through EB-192-A. For larger sizes consult factory.



Center mounting for 14 and 18-inch cascade bowls, 9 and 13-1/2-inch conical bowls. Center hold down for rim-type clamp mount.

Metal retainers may be rotated 360 degrees.

Adjustable height vibration isolator. Rotatable metal retainer attached to isolator. Height of unit may be adjusted with retainer in fixed radial location. Floating fastener may be tightened for rigid attachment to isolator



Syntron® Electromagnetic Parts Feeder Drive

Syntron Model EB-A Vibratory Parts Feeder Drives

Recommended Bowls	A	B	C	D	E	F	G	H	K	L	*Weight
EB-00 For small parts handling applications, refer to page 2											
EB-112-A 10" Outside Track Bowl Feeds parts up to 1/2" long 14" Cascade Bowl Feeds parts up to 1 1/2" long	11	9 7/8	7 5/16	9 1/2	1 9/16	9 1/2	--	--	1 5/8	1 13/16	77 lbs
EB-132-A 12" Outside Track Bowl Feeds parts up to 3/4" long 18" Cascade Bowl Feeds parts up to 2" long	13	11 7/8	7 5/16	11 1/2	1 9/16	9 1/2	--	--	1 5/8	11 3/16	103 lbs.
EB-162-A 15" Outside Track Bowl Feeds parts up to 1 1/2" long 24" Cascade bowl Feeds parts up to 4" long	15 3/4	14 7/8	7 5/16	14	1 9/16	9 1/2	--	--	2 1/8	11 5/16	168 lbs.
EB-192-A 18" Outside Track Bowl Feeds parts up to 2" long	19	17 7/8	9 7/16	17	1 9/16	11 5/8	--	--	2 1/8	11 5/16	267 lbs.
EB-222-A 21" Outside Track Bowl Feeds parts up to 3" long 30" Cascade Bowl Feeds parts up to 6" long	22	21	9 7/16	19 1/2	1 7/16	11 3/4	--	--	2 3/4	2 1/16	394 lbs.
EB-252-A 24" Outside Track Bowl Feeds parts up to 3" long 36" Cascade Bowl Feeds parts up to 6" long	25	24	9 7/16	22 1/2	1 7/16	11 3/4	--	--	2 3/4	2 1/6	460 lbs.
EB-322-A 30" Outside Track Bowl Feeds parts up to 6" long	32	30	10 7/8	--	1 7/16	13 1/4	29 1/2	23 1/4	2 3/4	2 1/16	761 lbs.
EB-372-A 36" Outside Track Bowl Feeds parts up to 8" long	37	36	10 7/8	--	1 7/16	13 1/4	34 1/2	28 1/4	2 3/4	2 1/16	1012 lbs

*Weights shown are with spring system for tooled standard outside track bowls.

Note: Aluminum bowls require an adapter plate for mounting.

