



# Syntron® Offset Supply Hoppers

Designed to Handle Large Range of Parts; Minimal Floor Space Requirements

Storage & Gentle Feeding



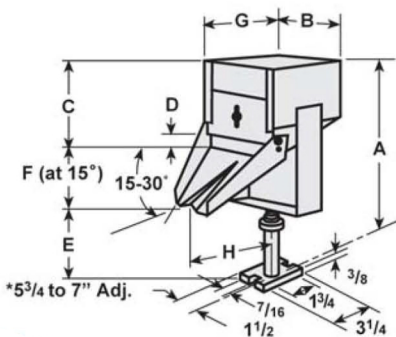
Hopper Capacity	A	B	C	D	E**	F**	G	H
1/4 cu. ft.	18 1/2 to 19 5/8	7	10 1/2	0 to 1 1/4	5 3/4 - 7	2 1/4	6	7 1/2
1 cu. ft.	As req'd	13	14 3/4	0 to 3 1/4	13 - 79	3 1/4	13	26 3/8
2 cu. ft.	As req'd	13	24 1/2	0 to 3 1/4	13 - 69	3 1/4	13	26 3/8
3 cu. ft.	As req'd	20	18 1/8	0 to 4	13 - 75	3 1/4	20	32 7/8
5 cu. ft.	As req'd	20	26 1/2	0 to 5 1/2	13 - 74	3 3/4	20	37 1/8
7 cu. ft.	As req'd	20	35 3/8	0 to 5 1/2	13 - 64	3 3/4	20	37 1/8

Consult factory for factory specialized units

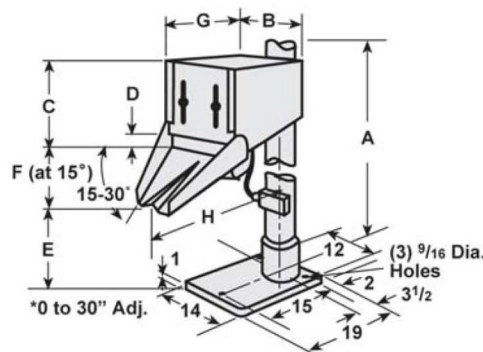
1 cubic foot through 7 cubic foot capacity hoppers are available for operation at 115, 230 or 460 volt, 50 or 60 cycle, single phase AC

\*\*Discharge chute is adjustable from 0° to 30°. Dimension @ 15°.

### 1/4 Cubic Foot Hopper Capacity



### 1, 2, 3, 5, 7 Cubic Foot Hopper Capacity



1, 2 & 3 Cubic Ft Hopper, 31" to 97" STD Post  
5 & 7 Cubic Ft Hopper, 55" to 103" STD Post

### Base Shape and Dimensions for 5 and 7-Cubic Foot Support Stand

