



Syntron® Model PFM-L Light Duty Supply Hopper

FOR STORAGE AND CONTROLLED FEEDING OF PARTS
WITH A DENSITY OF UNDER 50 LBS PER CUBIC FOOT

Accepts Bulk Parts and Feeds Gently Into Any System

The Syntron® PFM-L Light Duty Supply Hopper is a combination of storage hopper and light capacity feeder designed to gently convey light density bulk parts into rotary or vibratory parts feeder equipment.

The PFM-L is easily integrated into your parts handling system to assure proper bowl loading for efficient part orientation and feed rate.

Range of Hoppers

These units feature all stainless construction and are available with hopper capacities of 1, 2, 3 and 5 cubic feet in either low or high frame designs.

Adjustable Feed Rate

The feed rate is easily adjusted with the PFM-L. Simply adjust the slide gate on the front of the hopper to control the depth of parts. Once proper depth is selected, simply set the control knob to obtain the optimum feed rate.

Accessory Equipment

A flow switch, standard with the 1, 2, 3 and 5 cubic foot PFM-Ls, provides a demand signal for automatic conveying and loading.

A bin vibrator can be attached to the hopper for applications where bridging or clogging of parts occur.

Standard units are available for operation from 115 or 230 volt, 50 or 60 cycle, single phase, AC power supply.

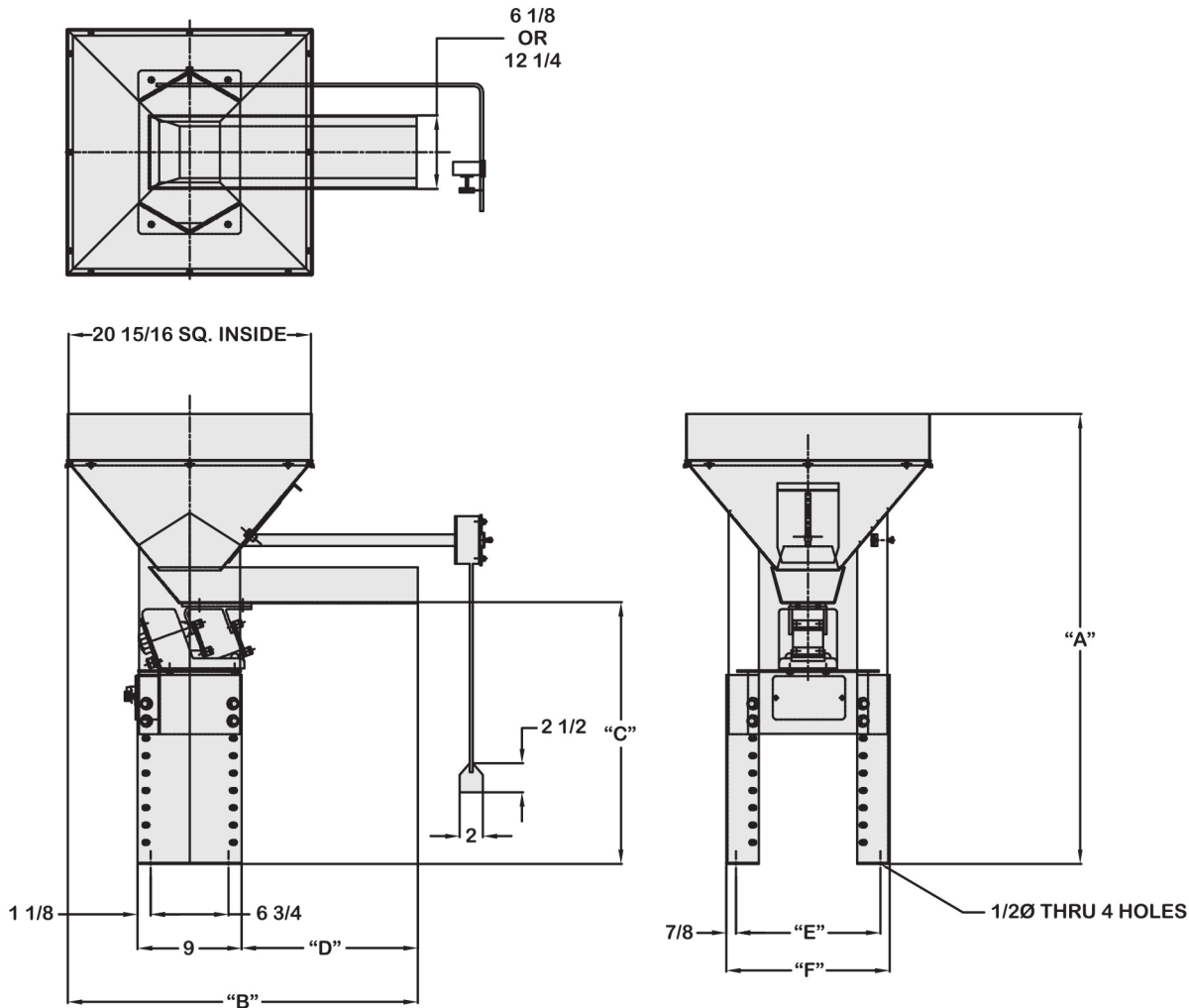


**Syntron® PFM-L
Light Duty Supply Hopper**

1, 2, 3 and 5 cubic foot
capacities

Specifications

FOR SYNTRON® MODEL PFM-L LIGHT DUTY SUPPLY HOPPERS



Syntron® PFM-L Light Duty Supply Hoppers (1, 2, 3 and 5 cubic foot capacities)

Dimensions In Inches

DESIGN	HOPPER CAPACITY	"A" * ADJUSTABLE NARROW	"A" * ADJUSTABLE WIDE	"B"	"C" ADJUSTABLE NARROW	"C" ADJUSTABLE WIDE
LOW FRAME	1 CU. FT.	26 TO 36 1/2	26 TO 36 1/2	27 3/8 OR 30 3/8	12 1/4 TO 22 3/4	12 1/4 TO 22 3/4
	2 CU. FT.	29 TO 39 1/2	29 TO 39 1/2	27 3/8 OR 30 3/8	12 1/4 TO 22 3/4	12 1/4 TO 22 3/4
	3 CU. FT.	33 TO 43 1/2	33 TO 43 1/2	27 3/8 OR 30 3/8	12 1/4 TO 22 3/4	12 1/4 TO 22 3/4
	5 CU. FT.	41 TO 51 1/2	41 TO 51 1/2	27 3/8 OR 30 3/8	12 1/4 TO 22 3/4	12 1/4 TO 22 3/4
HIGH FRAME	1 CU. FT.	36 TO 46 1/2	36 TO 46 1/2	27 3/8 OR 30 3/8	22 1/4 TO 32 3/4	22 1/4 TO 32 3/4
	2 CU. FT.	39 TO 49 1/2	39 TO 49 1/2	27 3/8 OR 30 3/8	22 1/4 TO 32 3/4	22 1/4 TO 32 3/4
	3 CU. FT.	43 TO 53 1/2	43 TO 53 1/2	27 3/8 OR 30 3/8	22 1/4 TO 32 3/4	22 1/4 TO 32 3/4
	5 CU. FT.	51 TO 61 1/2	51 TO 61 1/2	27 3/8 OR 30 3/8	22 1/4 TO 32 3/4	22 1/4 TO 32 3/4

*Frames adjustable in 1 1/2 inch increments