

STANDARD FEATURES:

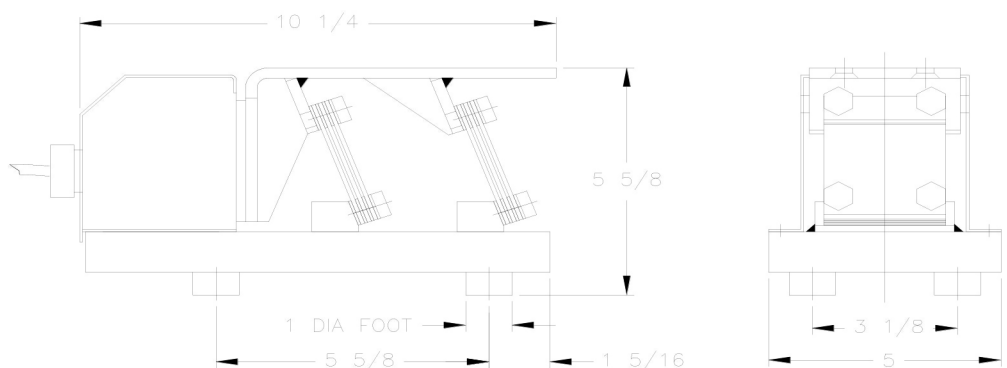
- ELECTROMAGNETIC DRIVE
- FEED RATES UP TO 75 FPM ▲
- EPOXY COATED BASE AND MOUNTING BRACKET
- 115 OR 230 VAC AND 50 OR 60Hz
- POWERED TO DRIVE A WIDE RANGE OF TROUGH SIZES AND WEIGHTS
- STABLE FEEDRATES UNDER VARIABLE PRODUCT LOADS & VOLTAGE FLUCTUATIONS

OPTIONS:

- BASE AND MOUNTING BRACKET AVAILABLE IN STAINLESS STEEL
- CONTROL WITH 0-10V AND 0-20mA INPUTS
- STANDARD OR CUSTOM TROUGHS MOUNTED AND TUNED PRIOR TO SHIPMENT
- CAN BE USED IN TANDEM FOR CONVEYOR APPLICATIONS OR WHEN HIGHER FEEDRATES ARE REQUIRED

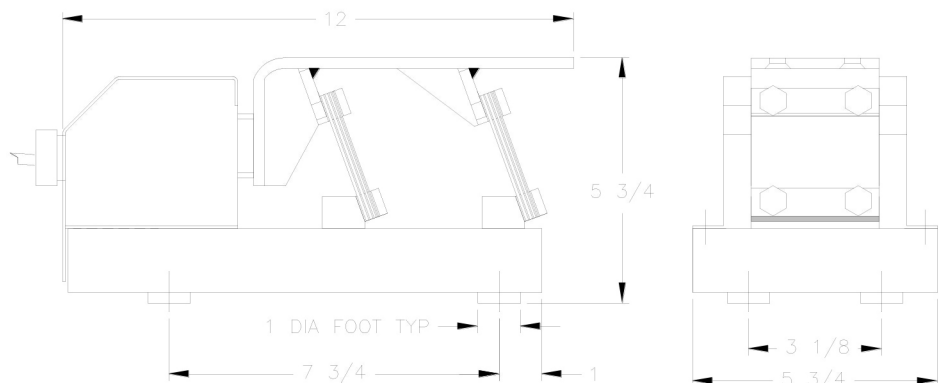
RDL-510:

- TROUGH (MAX*):
 - WEIGHT: 10 LB
 - LENGTH: 24 IN.
 - WIDTH: 10 IN.



RDL-620:

- TROUGH (MAX*):
 - WEIGHT: 20 LB
 - LENGTH: 36 IN.
 - WIDTH: 12 IN.



▲ STROKE AND FEED RATE ARE DEPENDENT ON TROUGH SIZE AND BULK MATERIAL PROPERTIES. PLEASE CONTACT HCA FOR DETAILS.

* PLEASE CONTACT HCA TO DISCUSS APPLICATIONS REQUIRING TROUGHS EXCEEDING LISTED PARAMETERS.